



## AKT - 90 HYGIENE CABIN UNIT ( Hand Disinfected - Thermometer )

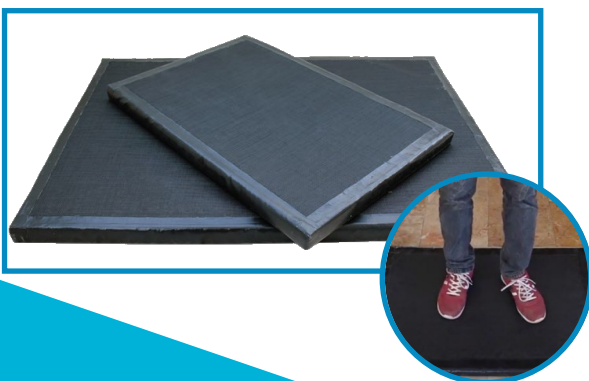
Your gate to protection...

### General Features



- Akt - 90 Hygiene Turnstiles are used for imperative touchless disinfection at the entrance of production areas.
- Akt - 90 Hygiene Turnstiles has Adjustable Fever Measurement, Audible and Light Warning Program. Its sensitive sensors performs error-free measurement.
- Thanks to the adjustable amount of spray Akt - 80 Hygiene Turnstiles does not allow passage, provides disinfection of both hands without wasting disinfectant.
- Thanks to its maximum 5 liter reservoir, you can no need to refill.
- Akt - 80 Hygiene Turnstile's durable and climate resistant stainless steel case ensures low service requirement and easy installation.
- 100% Home Production

### AKT -PASS ( Antimicrobial Disinfectant Mop ) ( Optional )



- Microorganisms carried to foot hygienic environments and used to prevent entry of other impurities.
- AKT-PASS edges and top are closed. It has a special filter and keeps dirt. Protects the disinfectant used. Durable, economic and quality.



## Technical Specifications

### Main Body

|                                   |                                                                    |     |
|-----------------------------------|--------------------------------------------------------------------|-----|
| Material                          | AISI- 304 - Stainless Steel - Scotch Brite ( Op. AISI-316 Quality) | 304 |
| Standard Dimensions ( W x L x H ) | 32 x 37 x 137 cm                                                   |     |
| Sheet Thickness                   | 1,5 mm                                                             |     |

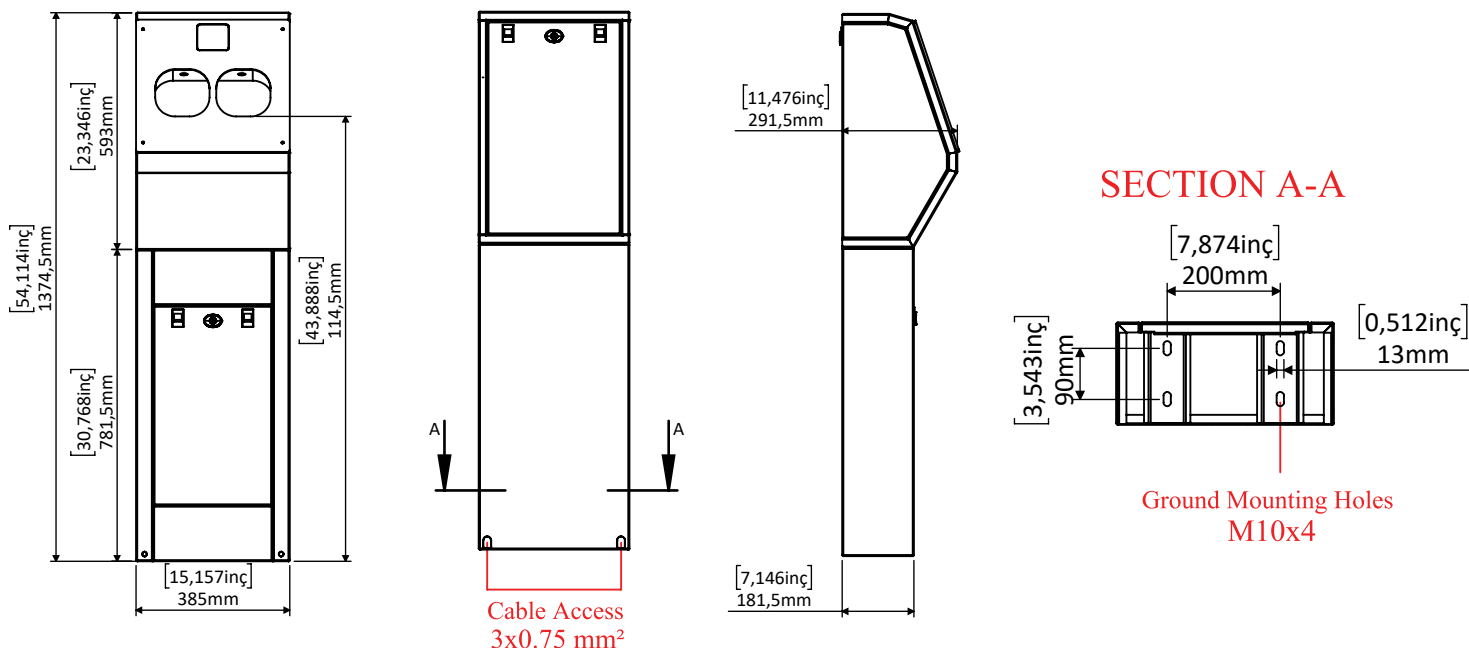
### Electrical Parameters

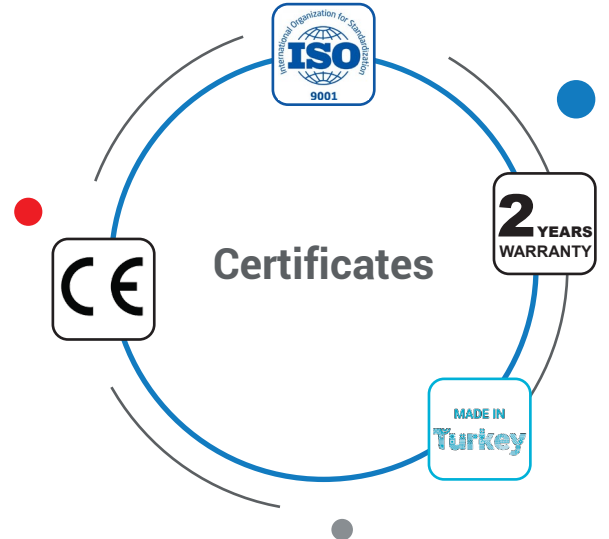
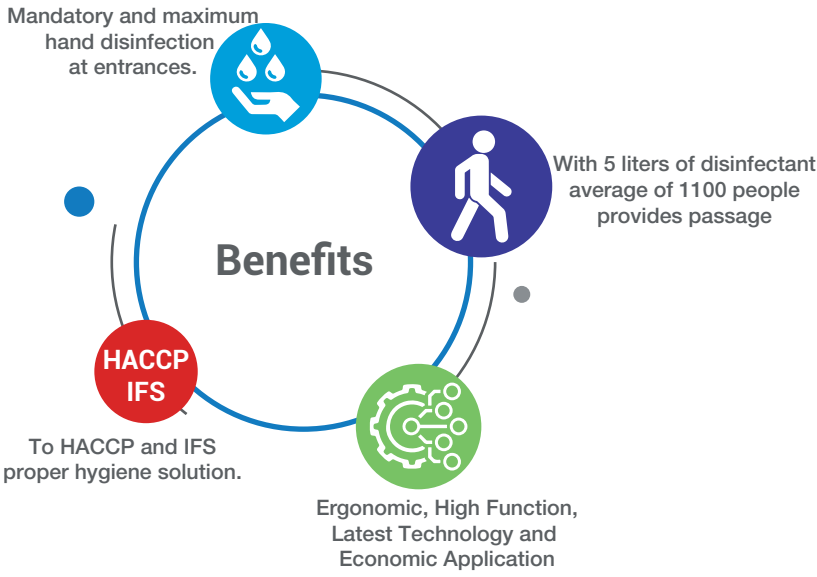
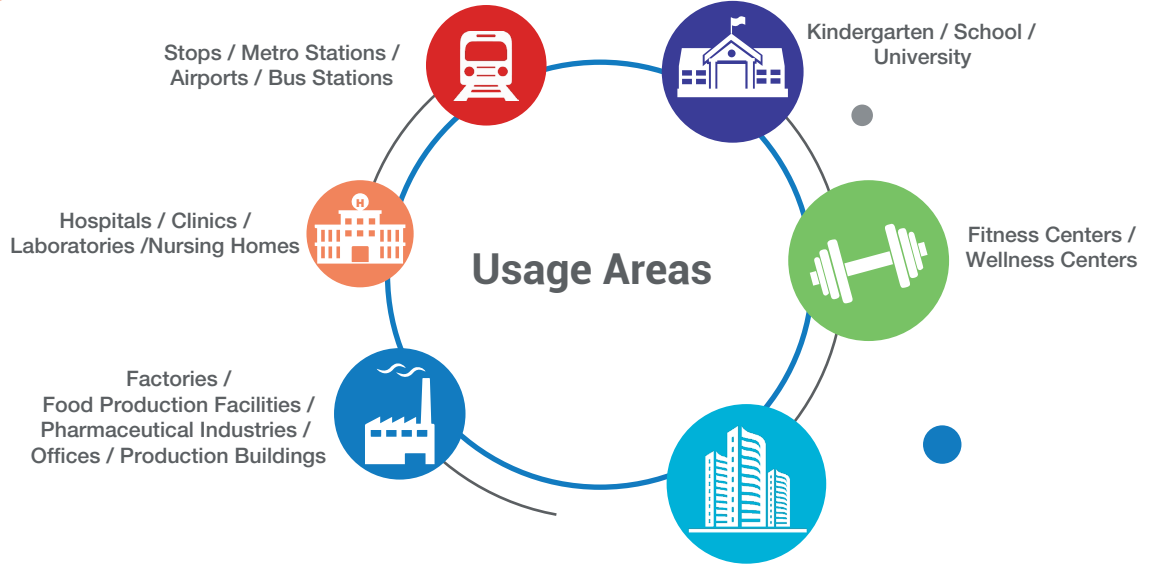
|                                       |                                         |        |
|---------------------------------------|-----------------------------------------|--------|
| Operating Voltage / Power Consumption | 110 - 240V AC 50/60 Hz (+/- %10) / 30 W |        |
| Nominal / Max Current                 | 250Ma / 850 Ma                          |        |
| Mean Cycles Between Failure ( MCBF )  | 1M Cycles                               | 24V DC |

### Function Working

|                        |                                                                                                                                                                          |  |
|------------------------|--------------------------------------------------------------------------------------------------------------------------------------------------------------------------|--|
| Control Systems        | All inputs are opto-coupler protected. Controlled by dry contact or grounding input. To be compatible with all kinds of access control units and photocell door systems. |  |
| Output Data (Feedback) | The systems provides dry contact, NO - Normally Open, entry - exit passage feedback by relays                                                                            |  |
| Passage Direction      | Led Warning System (Red / Green Warning)                                                                                                                                 |  |
| Emergency Mode         | The gate / turnstile to which the system is connected is released and becomes open to passage.                                                                           |  |
| Security Sensor        | There are 2 optical sensors.                                                                                                                                             |  |
| Usage Capacity         | 5 Liter Jerrycan ( Average 1100 passage )                                                                                                                                |  |
| Spraying Amount        | 2 sec ( 3-5 ml spraying )<br>( Adjustable 1-2-3-4-5 seconds programming mode )                                                                                           |  |
| Operating Humidity     | 0 / + 45° C ( RH 95% not-condensing )                                                                                                                                    |  |
| Operating Temperature  | -20° C / + 50° C                                                                                                                                                         |  |
| Working Environment    | Indoor - Outdoor                                                                                                                                                         |  |
| IP Rating              | IP - 54                                                                                                                                                                  |  |
| Disinfectant           | Turnstile disinfection systems should be used only in the liquid alcohol-based disinfectant.<br><b>NOTE: Disinfecting fluid is not included.</b>                         |  |

## Technical Drawing





### Factory

Ivedik OSB Agac Isleri San. Sit. 1333.Cad. No:25 Ostim - Yenimahalle  
ANKARA - TURKEY

+90 312 395 02 88

+90 312 395 02 70

### Branch

Perpa Ticaret Merkezi A Blok - Kat:7-8 No:758 Sisli - ISTANBUL - TURKEY

+90 212 320 69 79

+90 212 320 69 79

www.aktuelturnike.com

export@aktuelturnike.com.tr

### Local Reseller

|  |
|--|
|  |
|--|